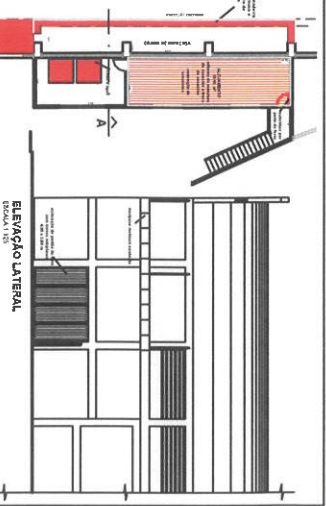
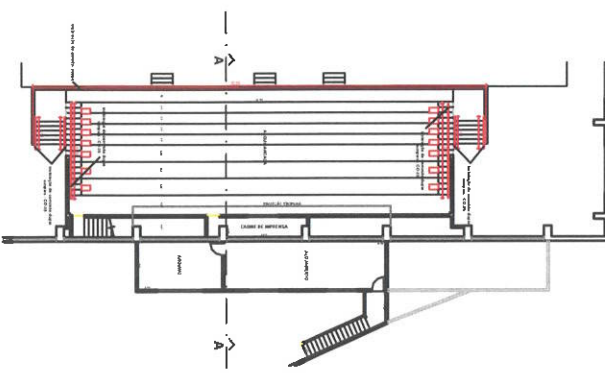
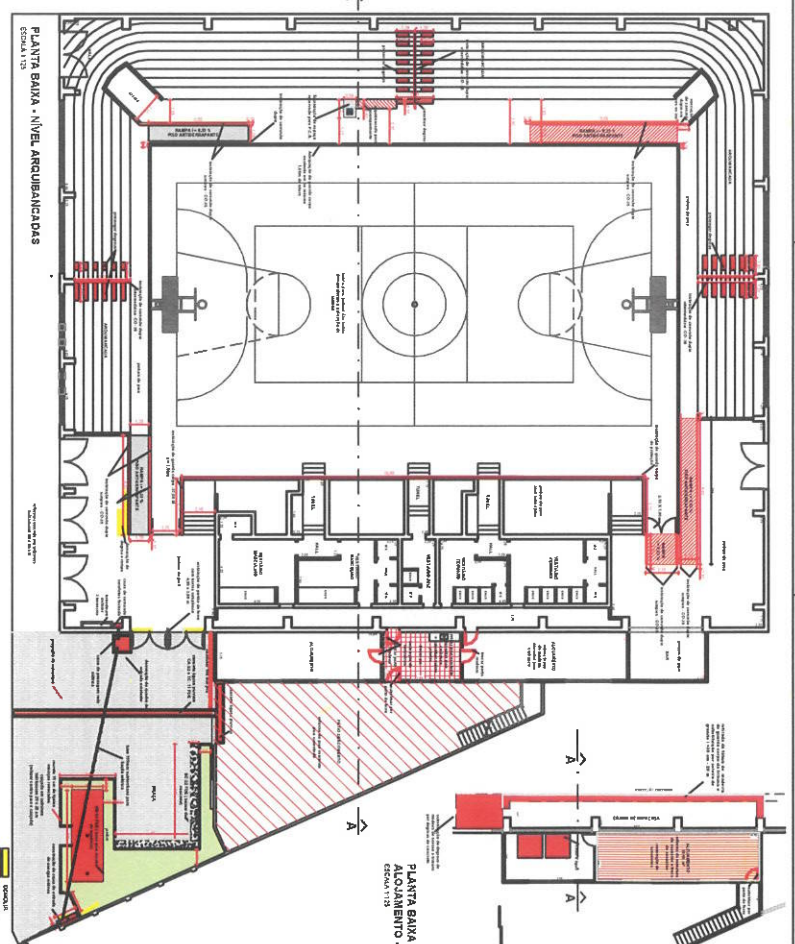
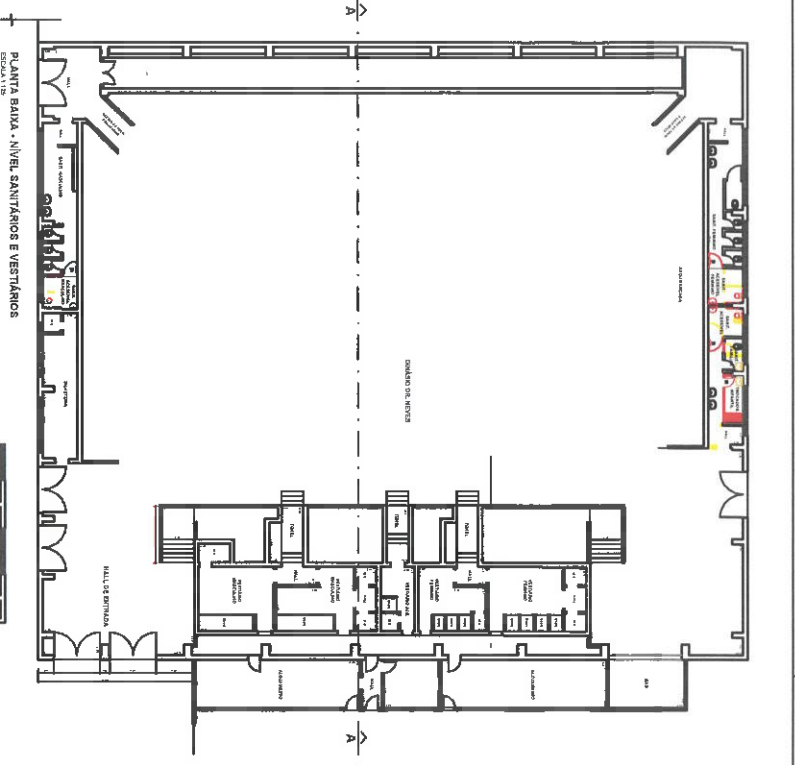
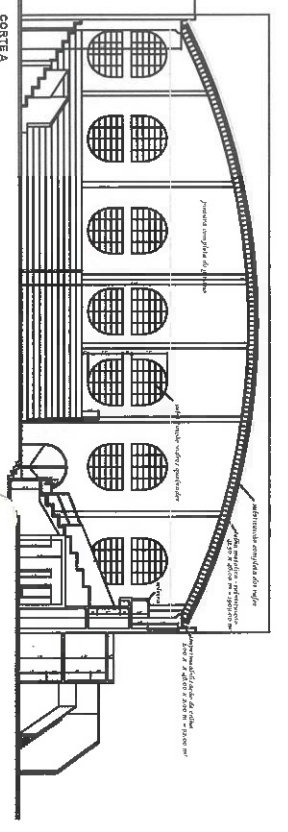
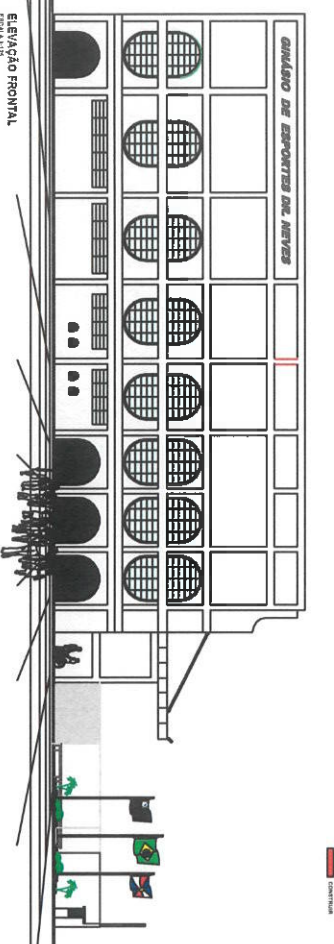


19/8/20



**PLANTA BAIXA - NÍVEL DO ALOJAMENTO SUPERIOR**  
ESCALA 1:10



**PRESIDENTIA MUNICIPAL DE JAUÁ**  
SECRETARIA DE HABITAÇÃO E PLANEJAMENTO URBANÍSTICO  
**PROJETO PARA REFORMA E REVITALIZAÇÃO DO GIÂNIO DE ESPORTES DR. NEVES**  
RUA CÔRREGO ANGELO MALVEZINS, Nº 108 - JAO - SP.

COORDENADOR TÉCNICO  
CONSTATÓRIOS  
CONTADOR

TITULO: PLANTA BAIXA  
FOLHA: 1/13

**01/01**